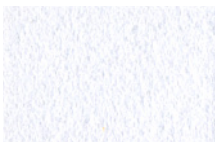


 ultrasuede[®] FOR footwear

Style 3150



5951 Black



5953 White



5952 Gray



3270 Sandshell



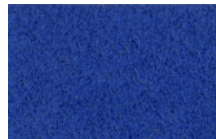
3275 Tan



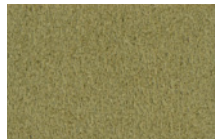
3269 Ginger Snap



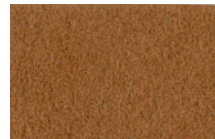
2823 Morning Sky



2825 Regal Blue



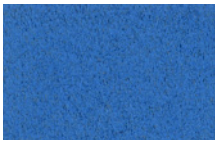
3317 Elmwood



3267 Glazed Ginger



3313 Brown



2815 Royal



7383 Turquoise



4622 Garden Green



3276 Brownstone



3265 Chocolate



2827 Embassy Blue



5311 Empire Yellow



6645 Hot Pink



8284 Orange

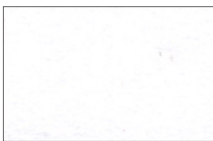


1422 Red

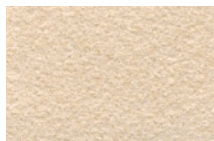
Style 8151



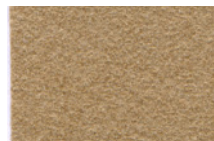
3237 Moss



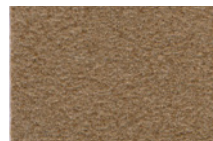
5882 White



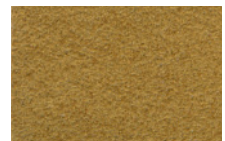
3228 Ivory



5302 Harvest



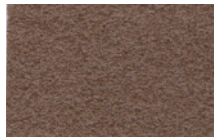
3234 Spice



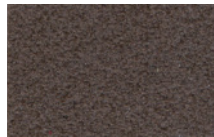
5303 Cumin



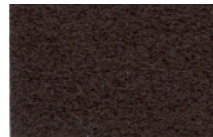
3226 Chocolate



3235 Woodhue



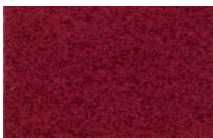
3237 Moss



3238 Espresso



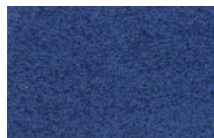
3973 Brown



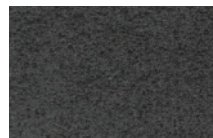
1418 Melrot



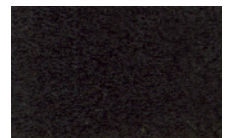
5881 Greige



2793 Lapis

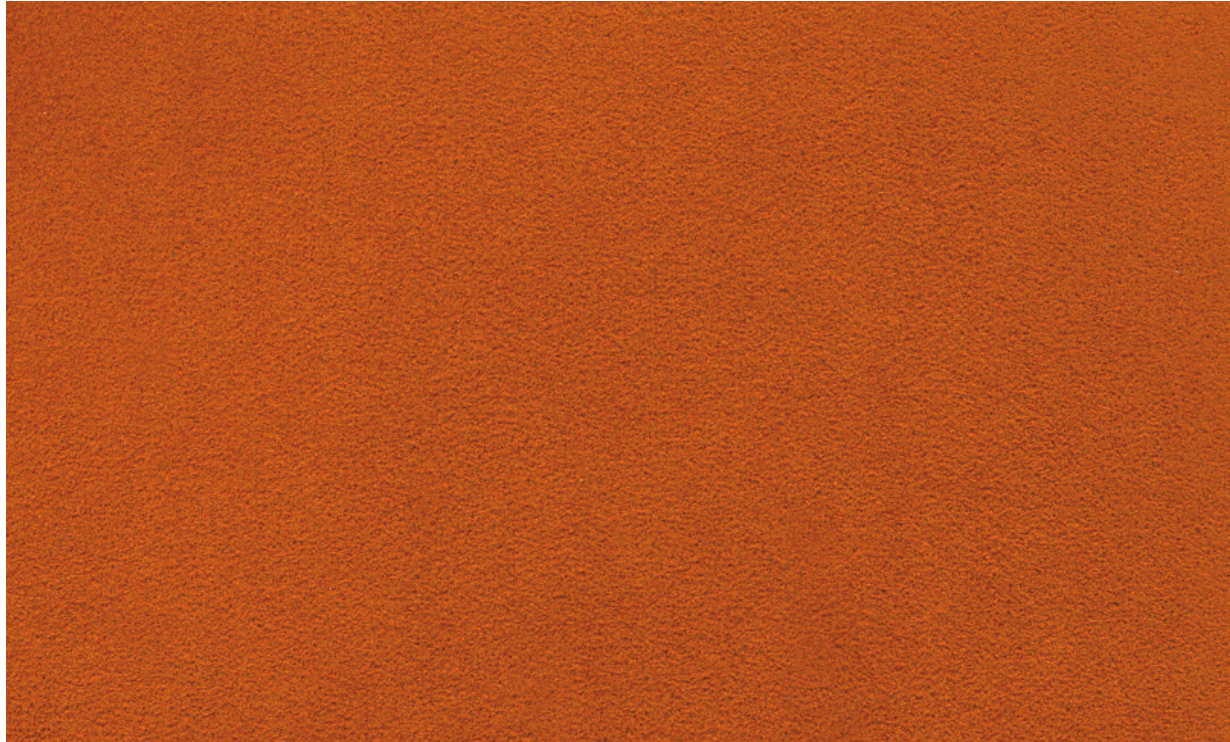


5904 Graphite

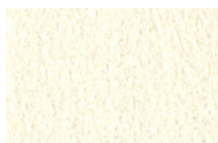


5905 Black

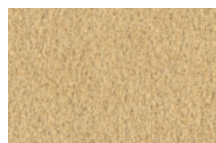
Style 8428



8297 Rust



3389 Country Cream



3391 Harvest



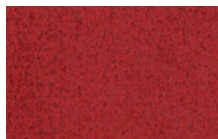
3393 Fawn



3395 Stone



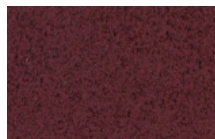
3400 Aztec



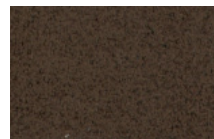
1440 Tomato



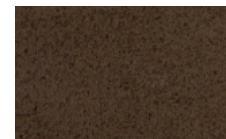
8298 Sienna



1441 Port



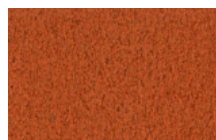
3387 Brownstone



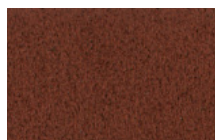
3382 Chocolate



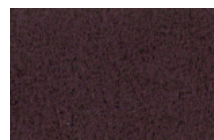
5327 Mustard



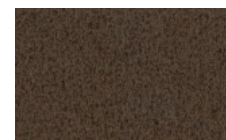
8297 Rust



3403 Clay



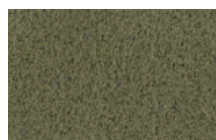
3401 Coffee



3386 Espresso



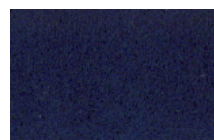
4641 Cactus



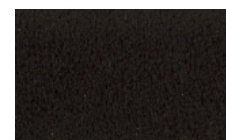
4640 Herb



7394 Jazz Blue



2841 Deep Sea



5977 Black Onyx

SPECIFICATIONS

STRIKER

Style: 3150

Composition:

65% polyester ultra-microfiber, non-woven with 35% non-fibrous polyurethane binder

Width: 48"

Put-up: 33 yard R.O.T.

Thickness: 1.2 mm

Weight: Approx. 10.47 oz. per square yard (±4%)

Fiber Fineness: 0.14 denier

MARATHON

Style: 8151

Composition:

80% polyester ultra-microfiber, non-woven with 20% non-fibrous polyurethane binder

Width: 57"

Put-up: 33 yard R.O.T.

Thickness: 0.70 mm

Weight: Approx. 6.7 oz. per square yard (±4%)

Fiber Fineness: 0.19 denier

REGATTA

Style: 8428

Composition:

100% polyester ultra-microfiber, non-woven with non-fibrous polyurethane binder

Width: 57"

Put-up: 33 yard R.O.T.

Thickness: 0.9 mm

Weight: Approx. 7.8 oz. per square yard (±4%)

Fiber Fineness: 0.19 denier

All footwear products shown on this card have been tested to the basic industry accepted test methods listed below:

Breaking Strength and Elongation, ASTM D 5034

Tongue Tear, ASTM D 2261

Colorfastness to Crocking, AATCC 8

Colorfastness to Water, AATCC 107

Colorfastness to Perspiration, AATCC 15

Abrasion Resistance, ASTM D 3884

Tear Strength, ASTM D 2261

Moisture Vapor Transmission, ASTM E96, Procedure B

For swatches or ordering information, contact:

**Toray International America Inc.
Ultrasuede Department
461 Fifth Avenue, 9th Floor
New York, NY 10017**

Tel: 212-922-3751

Fax: 212-972-4279

E-mail: footwear@ultrasuede.com

ultrasuede.com

TORAY LOOKS BEYOND TODAY

As part of Toray Group, a recognized leader in ecologically friendly manufacturing processes, we at Ultrasuede® are committed to minimizing our environmental impact. Through myriad efforts across all of our manufacturing facilities, we have effectively reduced CO2 emissions and aided in the elimination of effluent discharge.

For more than 40 years, Toray has taken decisive action directed at improving the working conditions of its employees, as well as the environment in which its plants operate. This has entailed being a leader in recycling of products to reduce its carbon footprint. All of these efforts are chronicled and reported on yearly through the Toray CSR programs.

Additionally, Ultrasuede® is aggressively promoting our new EcoDesign™ line of products. Based on Toray's innovative recycling technology, which reduces energy consumption and provides a more ecologically sound manufacturing process, EcoDesign™ products demonstrate our commitment to excellence through environmental responsibility.